

# BDT-SD1

BD-R/RE Disc Tester

In BD-R/RE disc production lines, Blu-ray Disc tester BDT-SD1 can be test a quality of Blu-ray discs with an abundance of testing functions.

This BDT-SD1 uses an original drive with a special BD-R/RE pick-up.

There is also the option of having a pick-up capable of testing BD-R/RE DL.



**for Blu-ray !!**

**R/RE !!  
SL/DL !!**



## 1. DEFECT INSPECTION ITEMS (with Disc map, graph)

Before Recording : RF-H, RF-L, TE, FE, WB-L, Level Map (RF, TE, FE, TV, FV)

After Recording : RF-H, RF-L, TE, FE, RF CYCLE, Level Map (TE, FE, TV, FV)

## 2. MEASUREMENT ITEMS

- Before Recording -

Rg-V, PPb, PPb-RV, PPb-LV, NWS, WOBeat, WOCNRb, ADERb,  
Radial-Lb, Radial-Hb, AxialErr-Lb, AxialErr-Hb, RA, VA

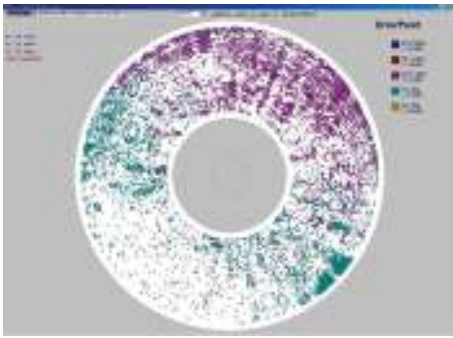
- After Recording -

PPa, PPa-RV, PPa-LV, PPr, WOCNRa, ADERa, R8H, I8H-RV, I8H-LV, I8H-LR, I2/I8, I3/I8, I8/I8H,

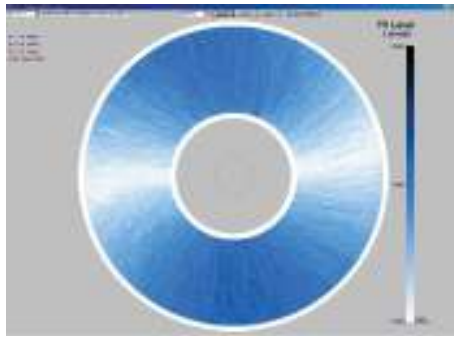
The quality of BD-R/RE DISC can be checked easily by using our products.

# Blu-ray Disc Tester

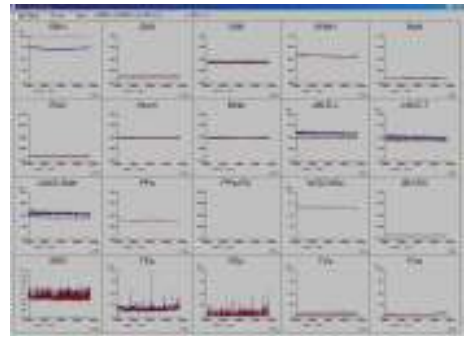
<b>Testing Mode</b> <ul style="list-style-type: none"><li>- Random Measurement Mode</li><li>- Defect Inspection Mode</li><li>- *Power Sweep Mode</li><li>- *Over Write Mode (For BD-RE)</li></ul>	<b>Monitor Signal</b> <p>RF, TE, FE, WB, PushPull, TV, FV, Spindle Index</p>
<b>Another Function</b> <ul style="list-style-type: none"><li>- Disc Information Reading Function</li><li>- Manual Mode</li></ul>	<b>Speed</b> <p>Reading Speed : 1x</p>
	<b>Remark</b> <p>Not Required:</p>



Error Point Map



Error Level Map



Defect Inspection

## GENERAL SPECIFICATIONS

- Diameter: 240(H) x 530(D) x 200(W)
- Power Supply: AC100-240V, 50/60Hz
- Power Consumption: 110W
- Weight: 11.0 Kg

## OPTION

- BD-ROM(SL/DL)
- Writing Drive
- Auto Loader



## Distributors

### ASIA

MITEK LAB CO., LTD  
11F-3, NO. 139, FU-HO RD., YUNG-HO CITY,  
TAIPEI HSIEN, TAIWAN R.O.C.  
TEL 02-2920-5034 FAX 02-2924-9725  
E-mail [sales@miteklab.com.tw](mailto:sales@miteklab.com.tw) URL <http://www.miteklab.com.tw/>

### KOREA

J-TECH CORPORATION  
#1424, BOBOS, 5-2, SOONAE-DONG, BUNDANG-KU,  
SUNGNAM-CITY, KYUNGKI-DO, 463-825, KOREA  
TEL 050-2220-0813 FAX 050-2220-0810  
E-mail [chang678@hananet.net](mailto:chang678@hananet.net)

### EUROPE /AMERICAS

EFOCUS INTERNATIONAL LTD  
ENTERPRISE HOUSE, BEESON'S YARD, BURY LANE,  
RICKMANSWORTH, HERTS, WD3 1DS, U.K.  
TEL 019-2371-8888 FAX 019-2371-8849  
E-mail [success@efocus.co.uk](mailto:success@efocus.co.uk) URL <http://www.efocus.co.uk/>

※ Product specification is subject to change without prior notification.

## Manufacturer

### EXPERT MAGNETICS CORP.

Unit B 23/F., MTG Bldg., 1-3 Nakase, Mihama-Ku, Chiba-City, Chiba, 261-8501, Japan  
TEL +81-43-296-2015 FAX +81-43-296-2014  
E-mail : [sales@expertmg.co.jp](mailto:sales@expertmg.co.jp) URL <http://www.expertmg.co.jp/>